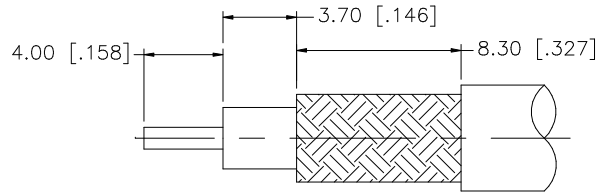
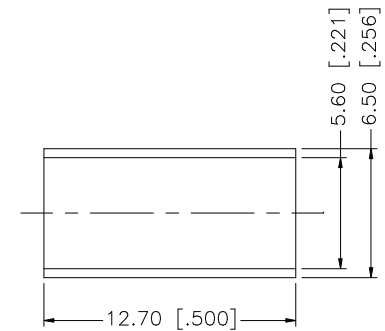
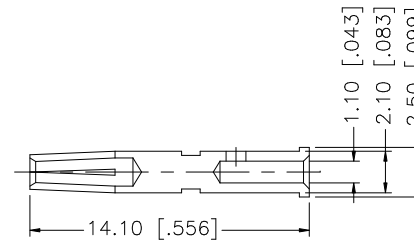
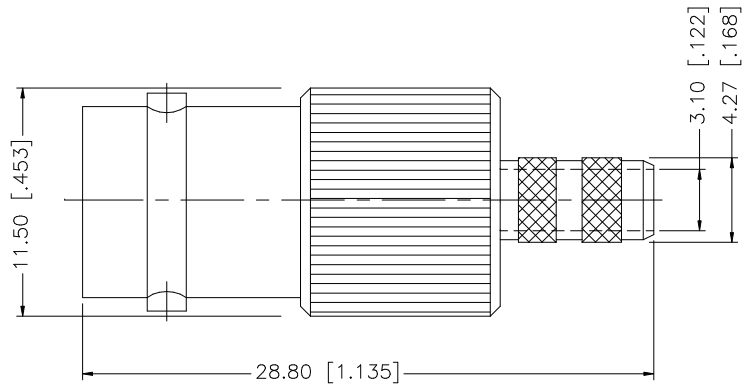


REV.	DATE	DESCRIPTION
NC	07/31/05	INITIAL RELEASE
A	10/30/05	MODIFY FERRULE DIMENSIONS, ADD CABLE DESCRIPTION.



RECOMMENDED
CABLE STRIPPING DIM'S



NOTE:

1. CRIMPED FERRULE
HEX CRIMP SIZE .213"
2. CRIMPED CONTACT PIN
HEX CRIMP SIZE .068"

8					<p>UNLESS OTHERWISE SPECIFIED DIMENSIONS ARE IN MILLIMETERS. DIMENSIONS IN [] ARE IN INCHES AND FOR CUSTOMER REFERENCE ONLY.</p> <p>UNLESS OTHERWISE SPECIFIED TOLERANCES FOR MILLIMETERS ARE: 0.5 - 8mm ± 0.20mm 8 - 30mm ± 0.40mm 30 - 120mm ± 0.50mm</p> <p>UNLESS OTHERWISE SPECIFIED TOLERANCES FOR INCHES ARE: .020 - .315 = ± 0.007" .315 - 1.180 = ± 0.015" 1.180 - 4.724 = ± 0.020"</p> <p>DO NOT SCALE DRAWING</p>	APPROVALS	DATE	<h1 style="color: blue;">Amphenol Connex</h1>			
7				DRAWN		G.R.S.	10/30/05				
6				CHECKED				PART DESCRIPTION <h2 style="text-align: center;">BNC CRIMP JACK</h2> <p style="text-align: center;">(FOR RG-223/U, 142/U, 402/U CABLE)</p>			
5				ISSUED							
4	FERRULE	COPPER	NICKEL	1		SHEET	1 OF 1	PART NO. <h2 style="text-align: center;">112513</h2>			
3	CONTACT PIN	PHOS. BRONZE	GOLD	1							
2	INSULATOR	DELTRIN	NATURAL	1				DWG. NO. 112513.DWG			
1	HOUSING/BODY	BRASS	NICKEL	1							
	DESCRIPTION	MATERIAL	FINISH	QTY	CAD FILE	C:/112/112513.DWG	REV. A	SIZE A	SCALE NA		